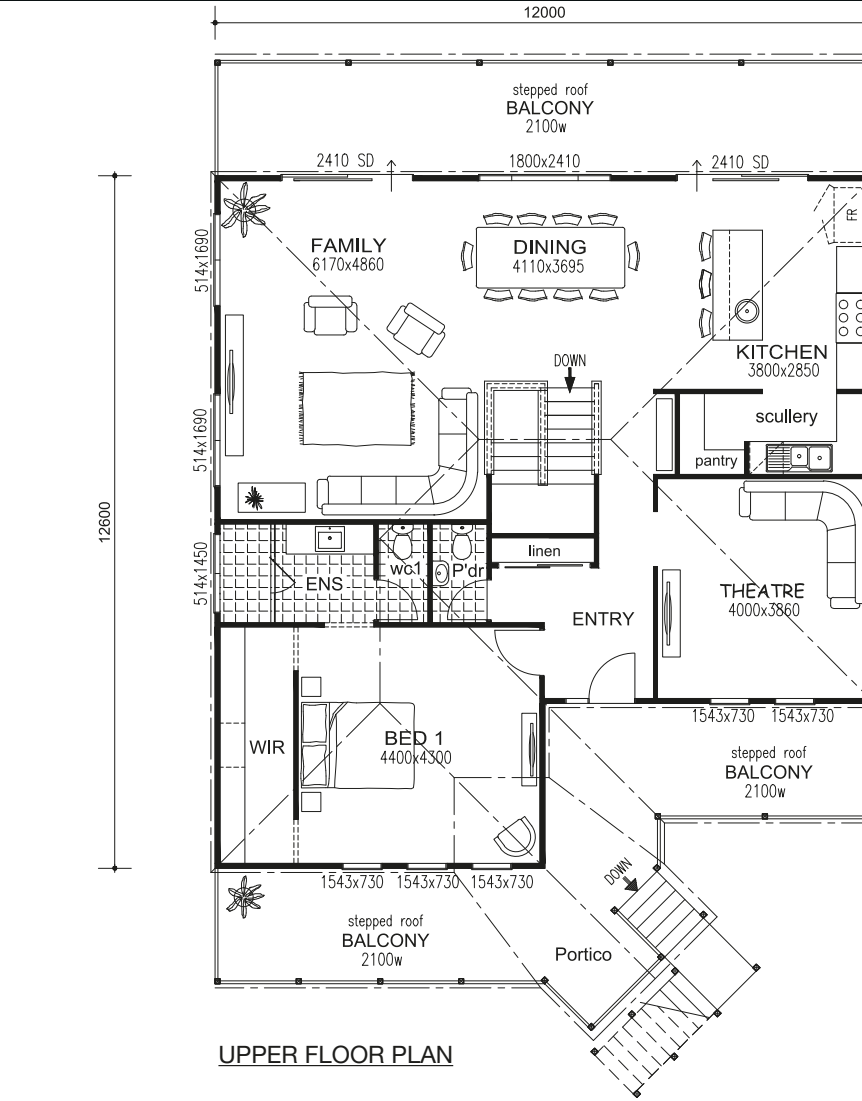
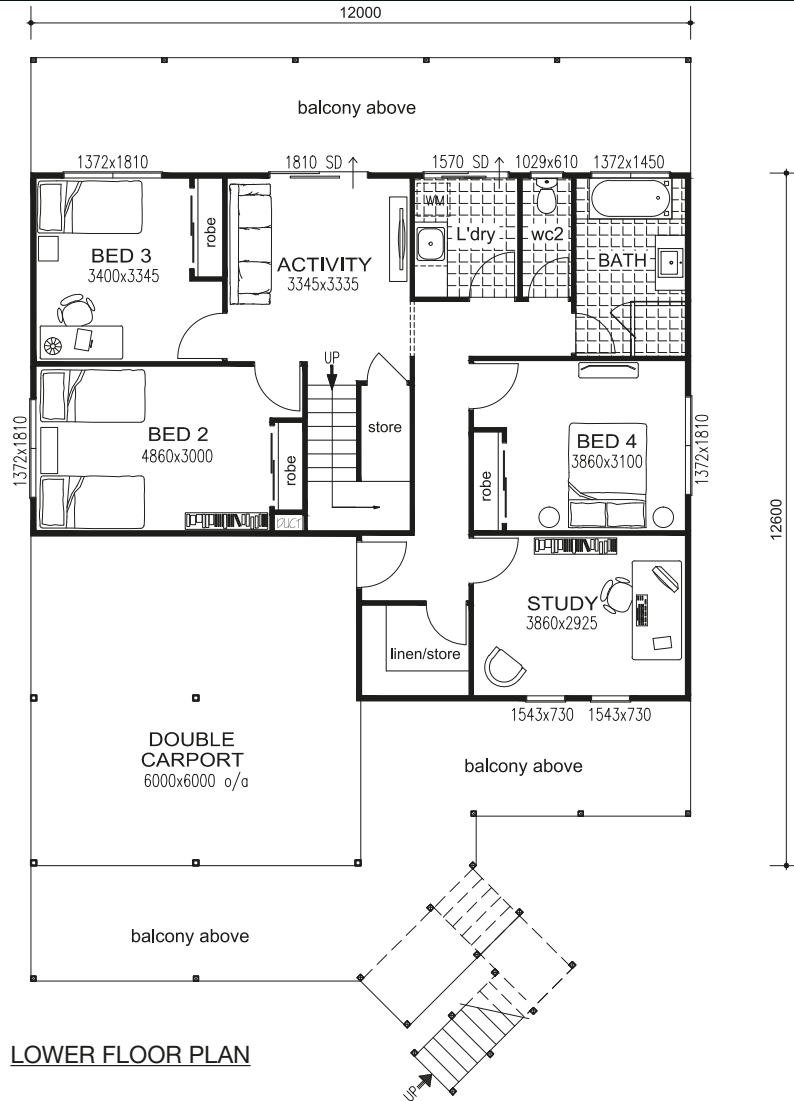


## MARYBOROUGH



Artist's impression



Total Floor Area: 379.90M<sup>2</sup>

Lower Floor Area: 97.40M<sup>2</sup>

Upper Floor Area: 133.20M<sup>2</sup>

Balcony, Verandah & Carport Floor Area: 149.30M<sup>2</sup>

The following are special features included in this home (see Signature Specification for full details):-

- Heritage weatherboard cladding;
- Colorbond roof sheeting, gutters and downpipes;
- 2.4m ceilings to Lower Floor with 2.7m ceilings to Upper Floor;
- Stepped front and rear Verandah with timber posts and gallows brackets;
- Sunrise detail to Portico/front stairs;
- Timber deck, balustrade and skirt to front and rear balconies;
- Timber door frames with splayed MDF architraves and skirting;
- Feature internal doors;
- Built In Robes with sliding doors to Bedrooms;
- Master Suite with walk through robe;
- Separate Powder Room;
- Huge Linen/Store;
- Walk In Scullery/Pantry;
- Large breakfast bar with round inset sink.