

ATHERTON | Signatureseries

ARTIST'S IMPRESSION

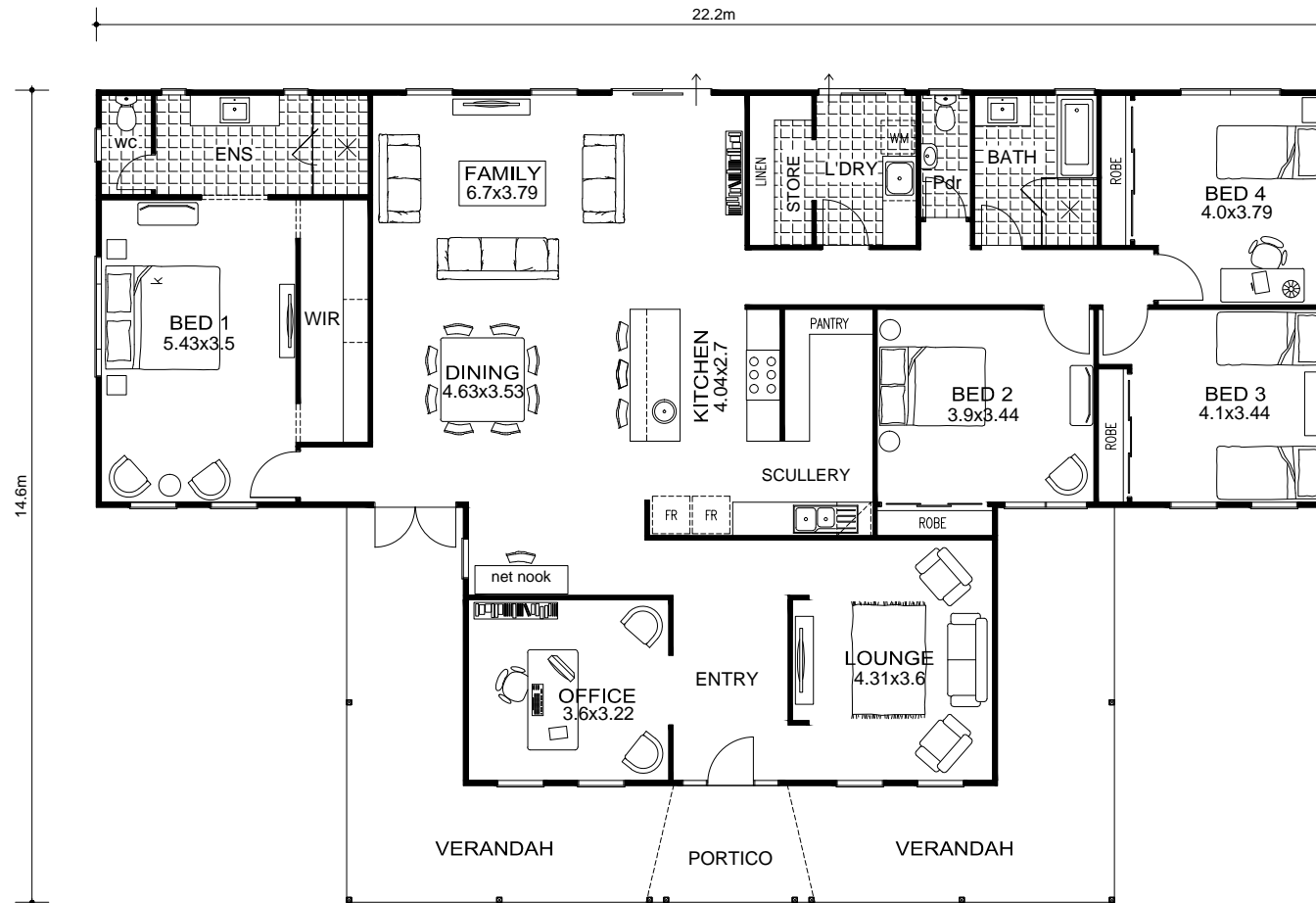


Builders Reg No. 9083

Experience Counts in the Country



House 214.5M²
Verandah 49.98M²
TOTAL 264.48M²



The following are special features included in this home (see Signature Specification for full details):

- PrimeLine® Heritage weatherboard cladding;
- COLORBOND steel roof sheeting, gutters & downpipes;
- 2.7m ceilings throughout;
- Stepped verandahs with timber posts & gallows brackets;
- Portico with double posts, sunrise detail & finial;
- 10 lite French doors to dining;
- Timber door frames with splayed MDF architraves & skirting;
- Feature internal doors;
- Built in robes with sliding doors to minor bedrooms;
- Master suite with walk through robe;
- Separate powder room;
- Walk in scullery/pantry;
- Huge island bench with round inset sink;
- Huge linen/store.